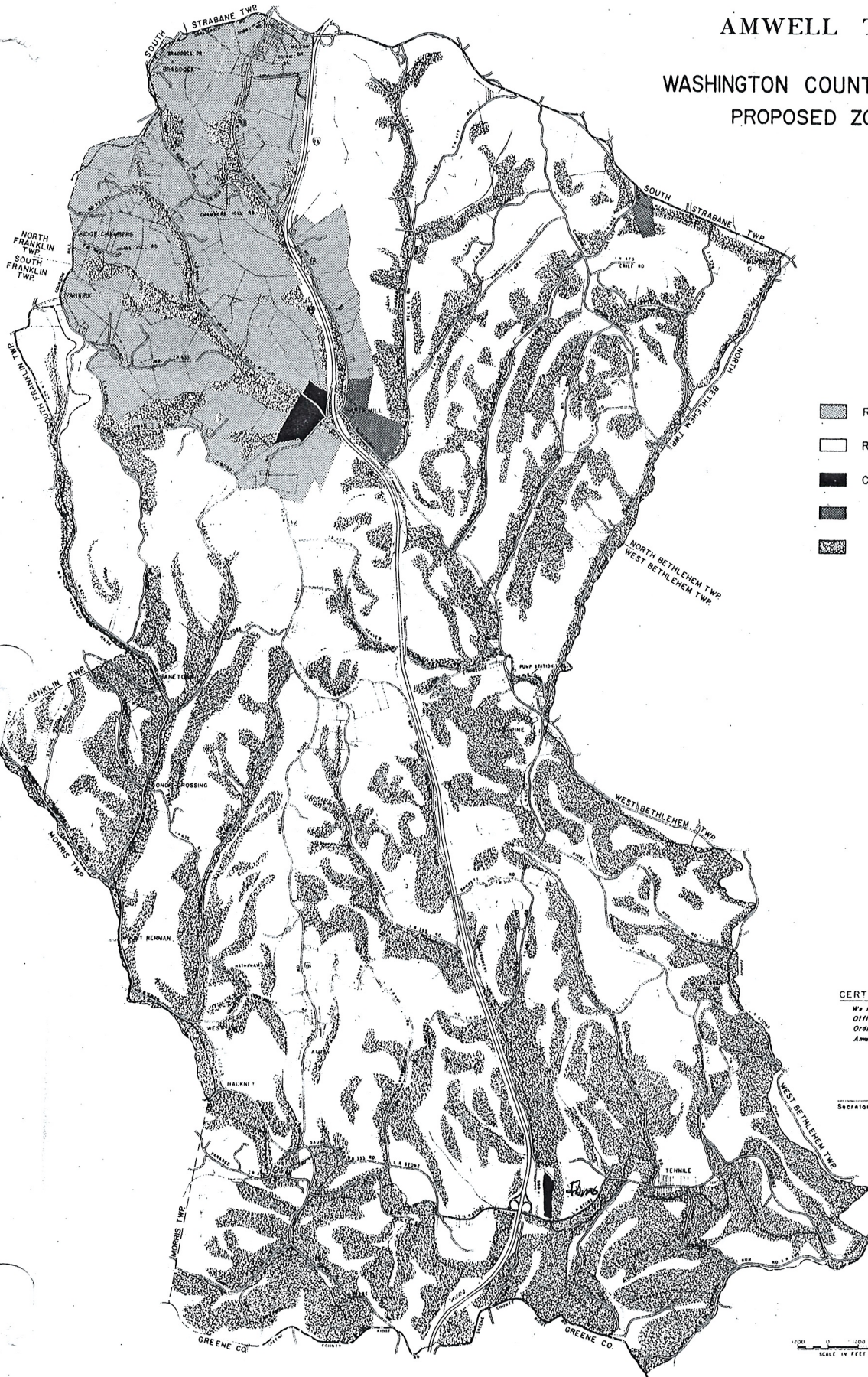







# AMWELL TOWNSHIP

## WASHINGTON COUNTY, PENNSYLVANIA PROPOSED ZONING MAP



### LEGEND

-  R-S SUBURBAN RESIDENTIAL
-  R-A RURAL AGRICULTURE
-  C-H HIGHWAY COMMERCIAL
-  I LIGHT INDUSTRIAL
-  C CONSERVATION

### CERTIFICATE

We the undersigned do hereby certify this map to be the Official Zoning Map and that it is a part of the Zoning Ordinance as adopted by the Board of Supervisors of Amwell Twp., County of Washington, Pennsylvania, ... (Date)

ATTEST ANWELL TOWNSHIP

Secretary

Chairman

Vice Chairman



SCALE IN FEET

PREPARED BY  
MICHAEL BAKER, JR., INC.  
CONSULTING ENGINEERS-PLANNERS  
READER, PENNSYLVANIA